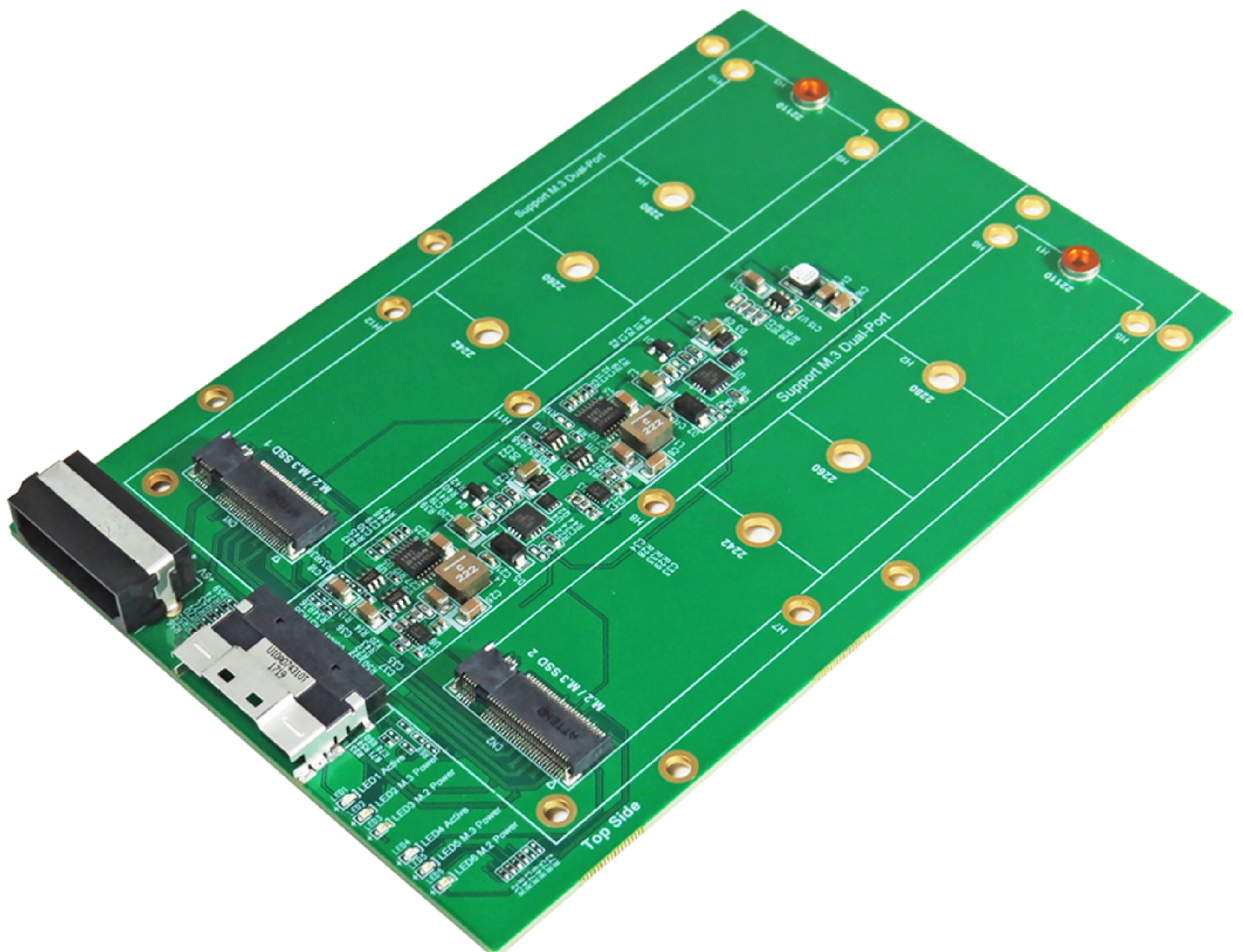


Innocard

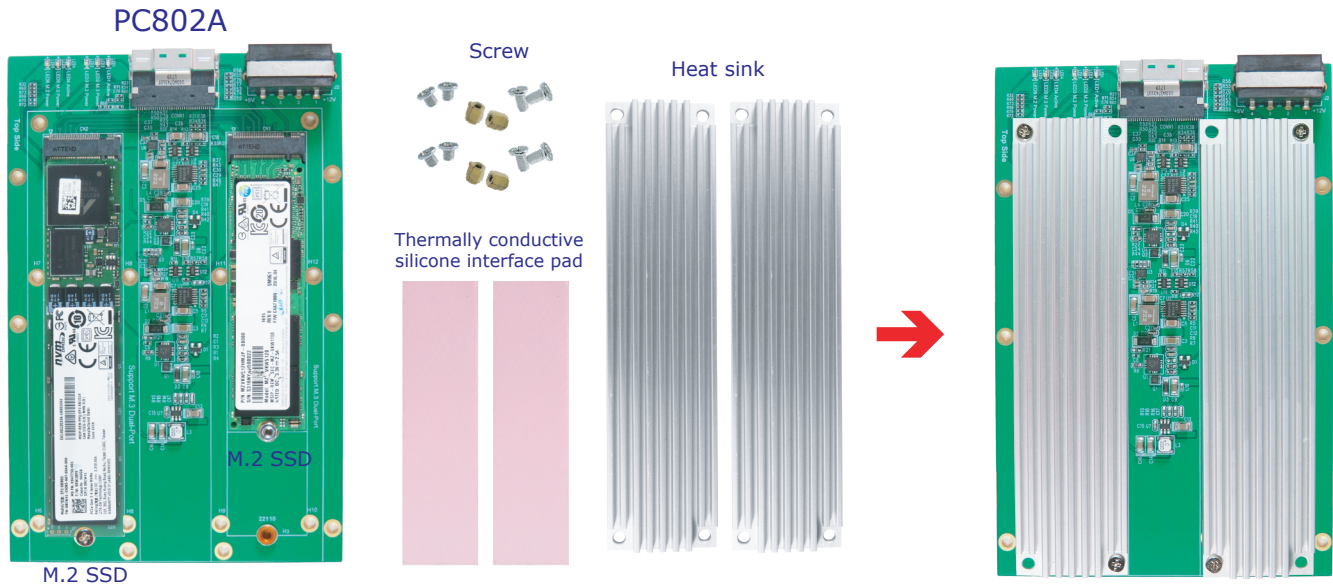
# Minerva

## PC802A

Slimline SAS 8-Lane for dual ports M.2/M.3 NF1 NVMe SSD Adapter



## Slimline SAS 8-Lane for dual ports M.2/M.3 NF1 NVMe SSD Adapter



### Features

- ※ Built-in SFF-8654 8x(Slimline SAS) Female connector, pin defined by PCIe
- ※ Built-in M.2 M-key Female connector, pin-out defined by PCIe
- ※ D1 Green LED on indicates M.2 SSD power ready
- ※ D2 Green LED on indicates M.3 SSD power ready
- ※ D3 RED LED Blinking indicates M.2 or M.3 NF1 active status
- ※ D4 Green LED on indicates M.2 SSD power ready
- ※ D5 Green LED on indicates M.3 SSD power ready
- ※ D6 RED LED Blinking indicates M.2 or M.3 NF1 active status

### Specifications

- ※ Compliant with NVM Express 1.0a
- ※ Supports PCI Express Base Specification Rev 3.1
- ※ Compliant with PCI Express M.2 Specification Version 1.1
- ※ Compliant with Samsung M.3 Specification Ver. 0.4
- ※ Supports SSD\_Form\_Factor\_Version1\_a
- ※ Compliant with SFF-8654 Specification Rev 1.2
- ※ Compliant with SFF-9402 Specification Rev 1.0
- ※ Compliant with Broadcom MegaRAID and HBA Tri-mode Storage Adapter

### Supports the following M.2 & M.3 SSD form factor

- ※ Type 2242-D2-B-M: 42mm(L) x 22mm(W)
- ※ Type 2260-D2-B-M: 60mm(L) x 22mm(W)
- ※ Type 2280-D2-B-M: 80mm(L) x 22mm(W)
- ※ Type 22110-D2-B-M: 110mm(L) x 22mm(W)
- ※ Type 305110-D2-B-M: 110mm(L) x 30.5mm(W) for M.3 NF1

## Application

※ The adapter card PC802A is designed for using with **Broadcom MegaRAID Tri-mode Storage Adapter Table 1** as below :

MegaRAID 9460-16i  
 MegaRAID 9460-8i  
 MegaRAID 9480-8i8e  
 MegaRAID 9440-8i

**Table 1 MegaRAID Tri-Mode Storage Adapters**

Adapter	9460-16i	9460-8i	9480-8i8e	9440-8i
<b>Ports</b>	16 internal	8 internal	8 internal, 8 external	8 internal
<b>I/O Processor</b>	SAS3516	SAS3508	SAS3516	SAS3408
<b>Form Factor</b>	LP-MD2	LP-MD2	LP-MD2	LP-MD2
<b>Storage Interface Connectors</b>	Four SFF-8643 x4	Two SFF-8643 x4	Two SFF-8643 x4, Two SFF-8644 x4	Two SFF-8643 x4
<b>Host Interface</b>	x8 PCIe 3.1	x8 PCIe 3.1	x8 PCIe 3.1	x8 PCIe 3.1
<b>Storage Interface</b>	SAS, SATA, and PCIe (NVMe)	SAS, SATA, and PCIe (NVMe)	SAS, SATA, and PCIe (NVMe) <sup>a</sup>	SAS, SATA, and PCIe (NVMe)
<b>Cache Memory</b>	4 GB, 2133 MHz, DDR4 SDRAM	2 GB, 2133 MHz, DDR4 SDRAM	4 GB, 2133 MHz, DDR4 SDRAM	N/A
<b>Cache Protection</b>	Yes	Yes	Yes	N/A
<b>Super Capacitor</b>	CVPM05 module	CVPM05 module	CVPM05 module	N/A

a. NVMe is supported for internal connection only.

※ The adapter card PC802A is designed for using with **Broadcom HBA Tri-mode Storage Adapter Table 2** as below :

HBA 9400-16i  
 HBA 9400-8i  
 HBA 9400-8i8e  
 HBA 9405W-16i

**Table 2 HBA Tri-Mode Storage Adapters**

Adapter	9400-16i	9400-8i	9400-8i8e	9405W-16i
<b>Ports</b>	16 internal	8 internal	8 external, 8 internal	16 internal
<b>I/O Processor</b>	SAS3416	SAS3408	SAS3516	SAS3616W
<b>Form Factor</b>	LP-MD2	LP-MD2	LP-MD2	LP-MD2
<b>Storage Interface Connectors</b>	Four SFF-8643 x4	Two SFF-8643 x4	Two SFF-8643 x4, Two SFF-8644 x4	Four SFF-8643 x4
<b>Host Interface</b>	x8 PCIe 3.1	x8 PCIe 3.1	x8 PCIe 3.1	x16 PCIe 3.1
<b>Storage Interface</b>	SAS, SATA, and PCIe (NVMe)	SAS, SATA, and PCIe (NVMe)	SAS, SATA, and PCIe (NVMe) <sup>a</sup>	SAS, SATA, and PCIe (NVMe)

a. NVMe is supported for internal connection only.